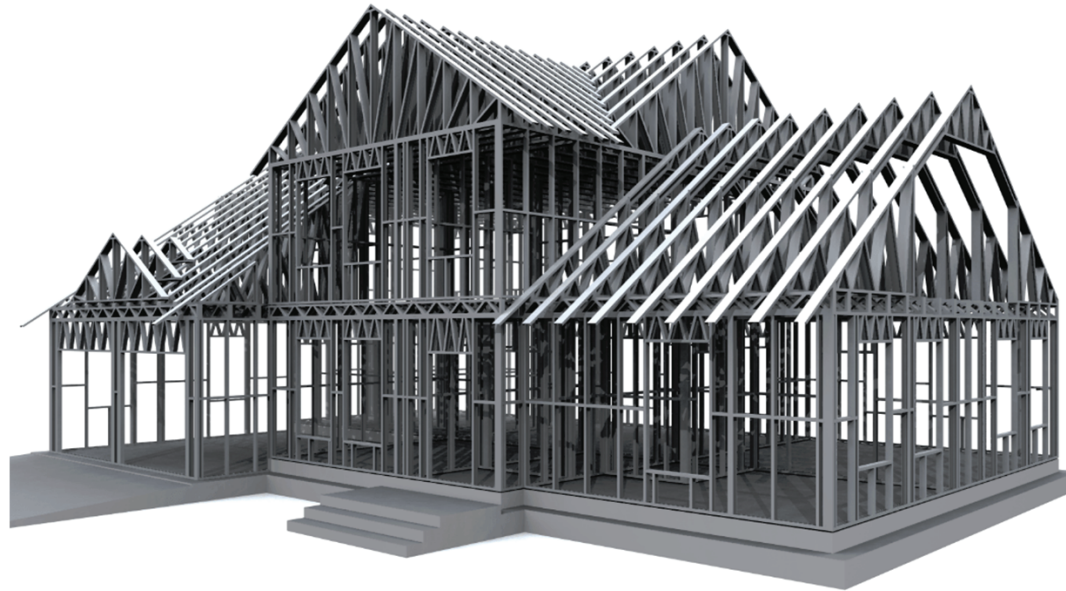


A Subsidiary of AP Scott Trinidad Limited



“STRUCTURES FOR LIFE!”

“THE MODERN WAY TO BUILD”

THE MODERN WAY TO BUILD

STEEL-FRAMED ENGINEERED SOLUTIONS LTD. Is the foremost provider in design, manufacture, assembly and installation of cold-formed steel framing solutions for all residential and light commercial construction. The system consists of C & U stud and tracks, custom designed for each individual project. Our system is an environment-friendly construction material which is recyclable unlike many other building materials.

We are focused on building back stronger, dealing with the real issues of Caribbean and climates and the vulnerabilities, and the construction sector with the pains of construction – shorter time to build, cleaner site, and most of the process and quality control is done off site in a factory environment.





THE MODERN WAY TO BUILD

Material wastage is a massive cost on construction sites. According to the article (attached to the application). "Construction and Demolition Waste Management Actions and Potential Benefits: A Perspective from Trinidad and Tobago"

(<https://www.mdpi.com/2075-5309/9/6/150/htm>). Construction material waste is estimated to be approximately 20-30%. Steel frame engineers to exact 1mm precision and is manufactured in a controlled environment thus resulting in minimum waste. Furthermore, steel used is 70% recycled already thus making it a green and sustainable solution.

If you are looking for the modern way to build, while being eco-conscious, look no further! .Aside from the other benefits of using our system, we consider environmental to be number one.



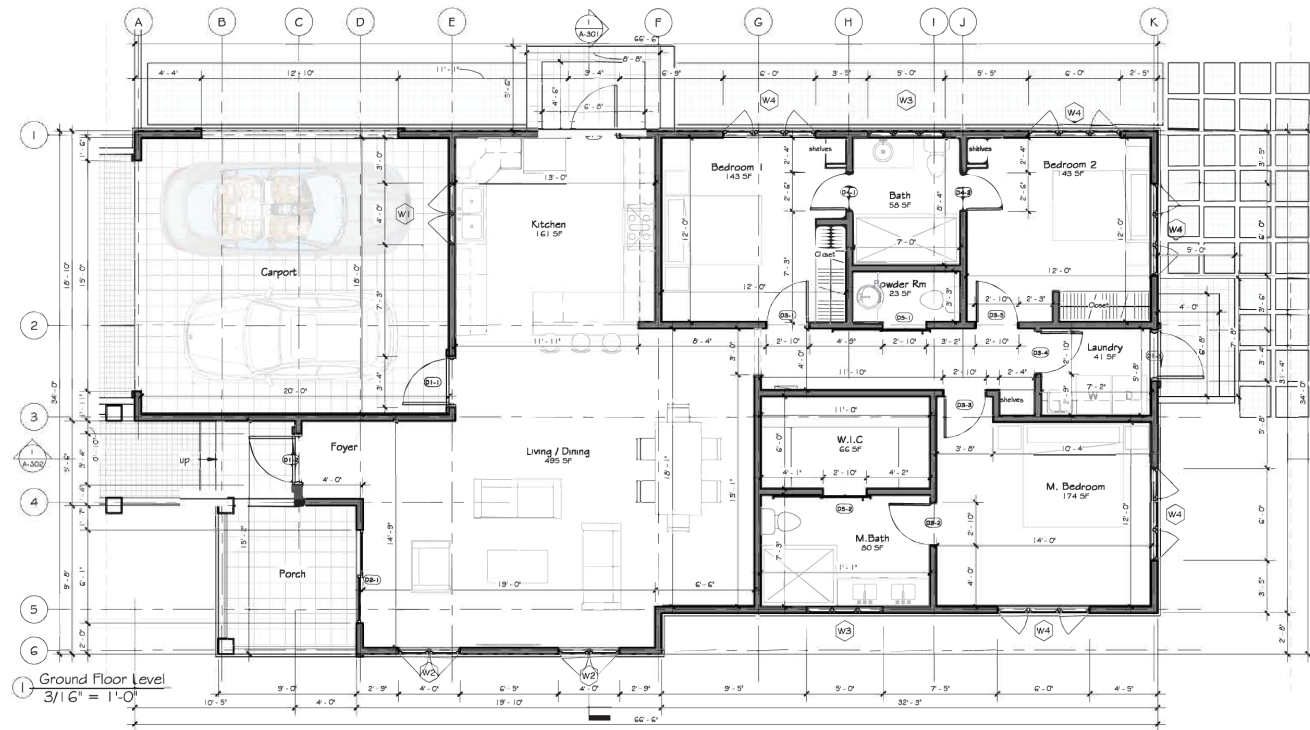
SCARLET IBIS

THREE BEDROOM,
TWO & A HALF BATH

EXTERIOR



FLOOR PLAN



PRICING

Save time and money with our “ready-to-go” designs complete with pre-done costings, bill of quantities, architecturals, complete engineering, standard foundation design and all documents ready to submit for approvals (when building in Trinidad only).

Prices shown separately for material and labor for the “superstructure” (enclosed shell of the building) and includes: Complete Steel framing for internal and external walls and roof framing and all fasteners and anchors. All external cladding and roof sheeting, radiant barrier insulation, soffits and guttering.

Price does not include: Foundation, internal gypsum, kitchens, bathrooms doors and windows, plumbing and electrical and anything not specifically mentioned above.

PRICING

FEATURES: + 2100sqft. + 3 Bedroom + 2.5 Bathroom

MATERIAL: **\$315,000** + VAT (TTD) or **\$46,000** (USD)

LABOUR (EST. IN TRINIDAD): \$ TTD

EXPORT ORDERS

Individual members are color coded, banded, and flat packed for economical shipping purposes.

We also offer installation support in the form of the following: Video tutorials, installation manual as well as the option to have support from our local team come to your site.

The “difficult” work is done in the engineering and manufacturing of the members in the factory. This leaves no room for errors and a seamless installation process.

LOCAL ORDERS

All components are delivered to site pre-panelised. Floor Joists are assembled in factory for easy installation on site.

This allows for erection efficiency, ensuring high quality on site, while significantly reducing labor costs.