

# Quick Installation Guide for **SIDING** (Overlapped)



Impact-resistant



Lightweight and Resistant



Plague-resistant



Water-repellent



Moisture-resistant



Non-combustible



Easy Installation

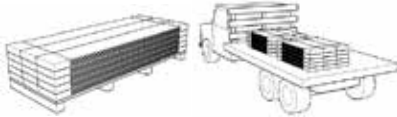
 **Plycem**<sup>®</sup>

Advanced Technology in Fiber Cement

[www.plycem.com](http://www.plycem.com)

## QUICK INSTALLATION GUIDE FOR OVERLAPPED SIDING

### TRANSPORTATION

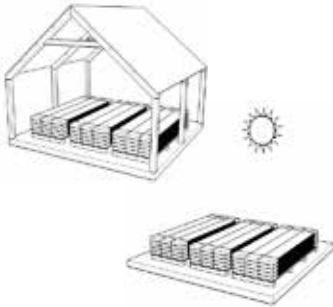


The overlapped Siding should be transported on a solid and flat platform, with moisture protection.

### STORAGE AND HANDLING

#### CORRECT

The overlapped Siding should be kept covered and dry. It should be stored on clean pallets on the floor.



#### INCORRECT

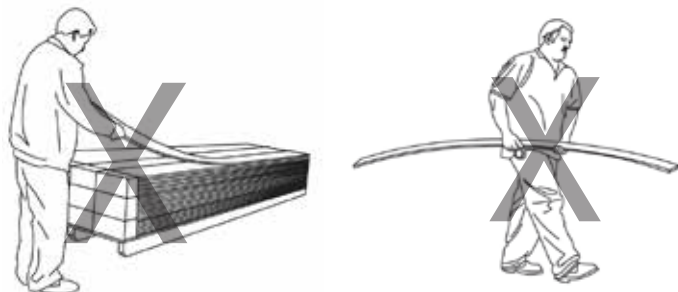
Protect the overlapped Siding from direct exposure to outdoors. Do not install it if wet or saturated with water.

### CORRECT HANDLING

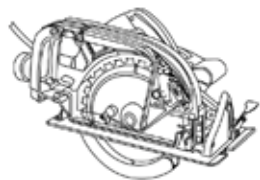


Each pack of Siding should be horizontally carried by two people. Protect the edges and corners to prevent them from breaking. Transport the Plycem overlapped Siding by the middle of its narrow edge.

### INCORRECT HANDLING



### CUTTING INSTRUCTIONS



Place the cutting station on a ventilated area- Reduce dust with a wedge blade circular saw equipped with a vacuum system and dust collector. Never use water when cutting. Use personal dust protection equipment -which should be properly adjusted.

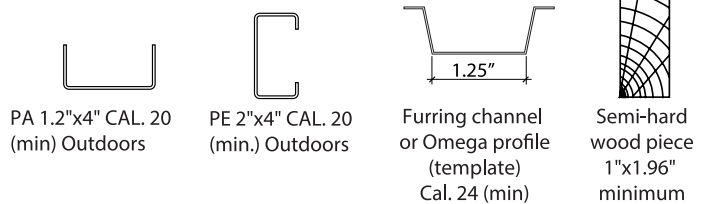
### SYSTEM COMPONENTS

#### Overlapped Siding

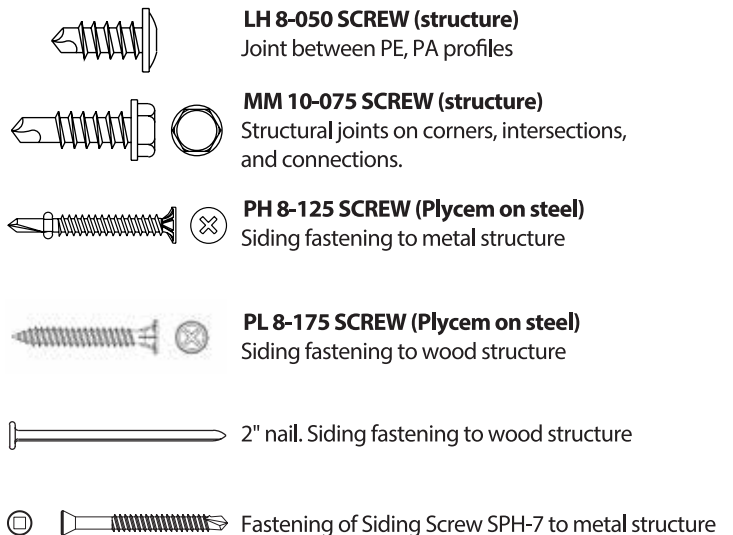
The overlapped Siding pieces are made from cement reinforced with cellulosic fibers. They have a smooth or wood-texture finishing. They are 0.55" thick, 8.14" wide, and 8 feet long (ask for stock).



#### Structure



#### Fastenings

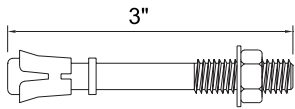


### FINISHING PRODUCTS

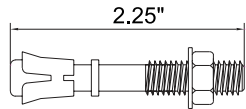


## QUICK INSTALLATION GUIDE FOR OVERLAPPED SIDING

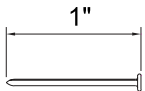
### STRUCTURE ANCHORAGE TO FLOOR



EXPANSION ANCHORAGE 3"



EXPANSION ANCHORAGE 2.25"



COUNTERSUNK NAIL 1"

### TOOLS



DRILL



CAULKING GUN



AIR NAILER



ROLLER



MEASURING TAPE



RASP



BRUSH



TROWEL

WEDGE BLADE  
CIRCULAR SAW

STRING



CONSTRUCTION LEVEL

### INSTALLATION INSTRUCTIONS ON LIGHTWEIGHT WALL

The metal fram should be caliber 24 (internal wall minimum) or Caliber 20 (external wall), with a maximum space of 2 feet from the middle of the profile. On external walls, a moisture barrier (Building Wrap) should be installed on the structure.



TYPAR

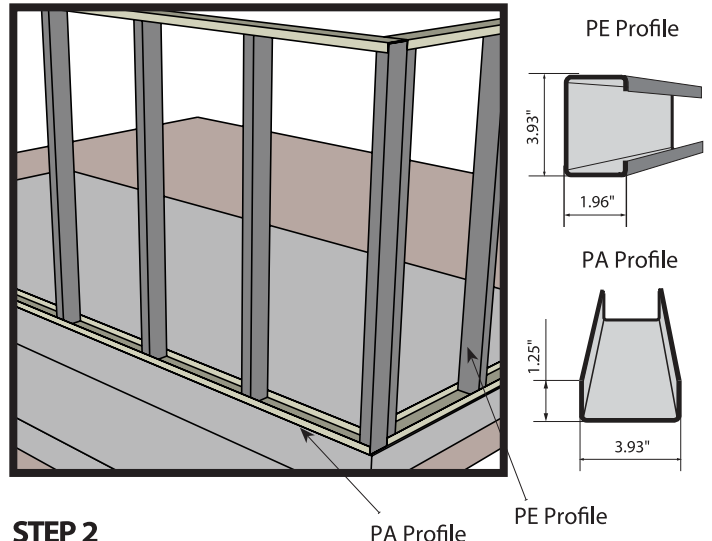


BUILDING WRAP

### FIRST STEPS

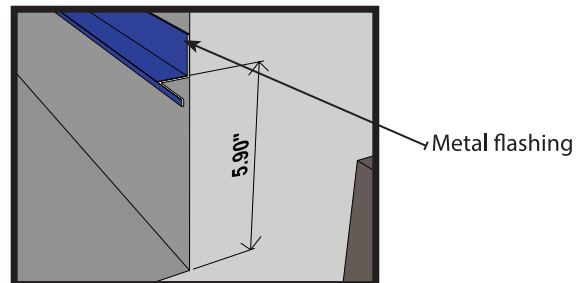
#### STEP 1

Place the structure with PA and PE profiles on the slap or rough floor.



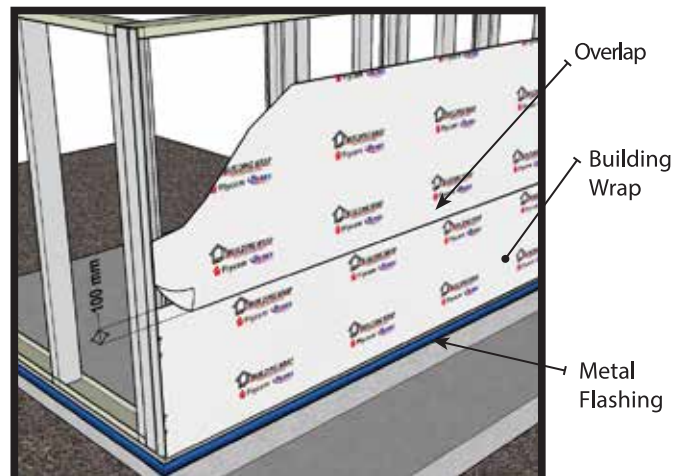
#### STEP 2

Install the flashing or start profile, which should be leveled.



#### STEP 3

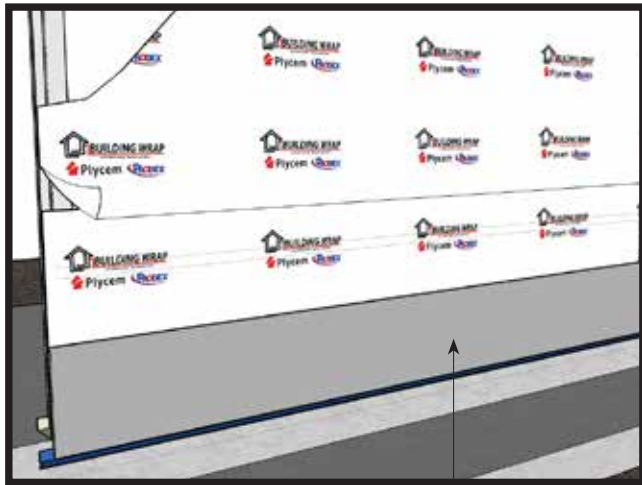
Place the Building Wrap, from left to right, from the bottom to the top, and keeping a 4" overlap. Make sure that the moisture barrier is on the back of the flashing profiles and wrapping the structure of the window and door edges.



## QUICK INSTALLATION GUIDE FOR OVERLAPPED SIDING

### STEP 4

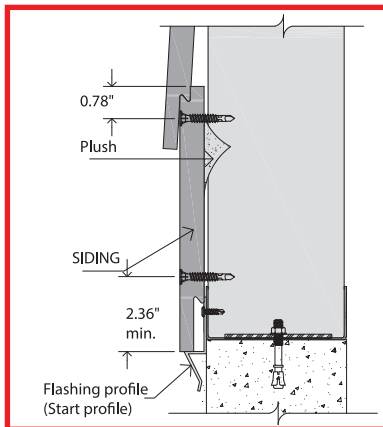
Place the first piece of Overlapped Siding from left to right. Then, continue this way with the rest of the pieces on the first line.



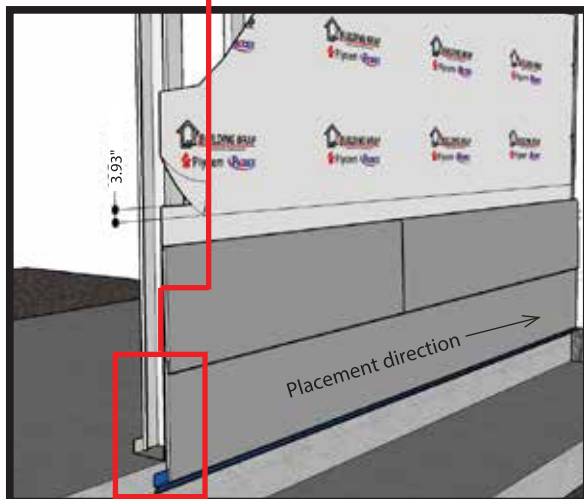
Overlapped Siding

### STEP 5

Place the following pieces of siding on the second line and on the following lines. This should always be done from left to right, from , alternating the joint (fastened).

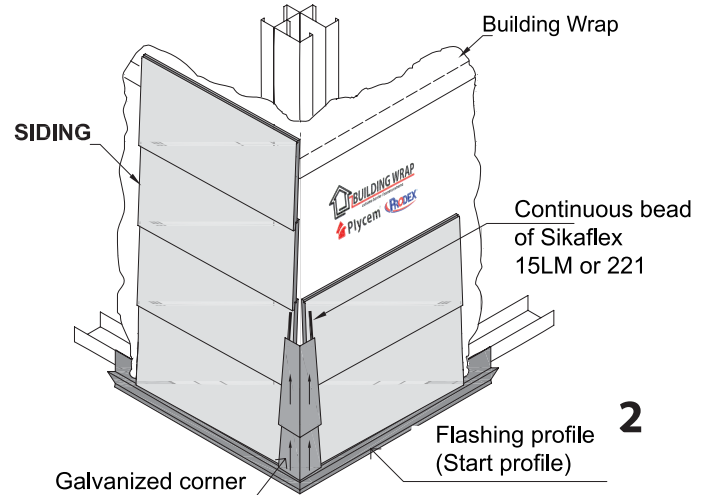
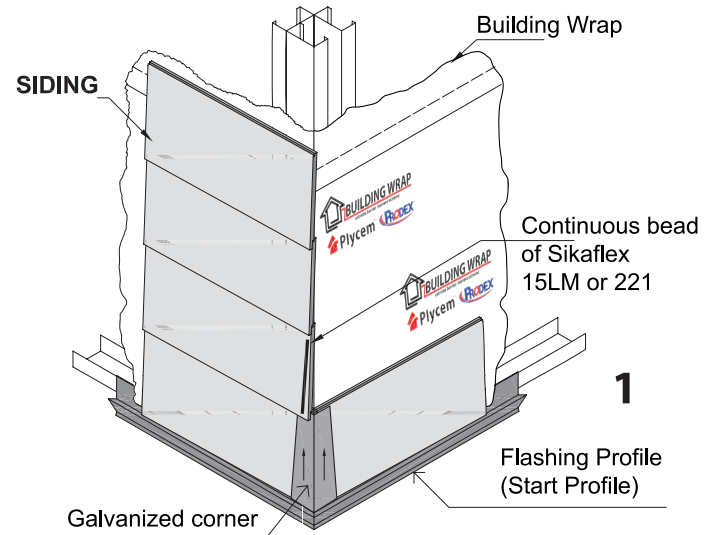


Note: Only the first line is reinforced with two screws.



### PLACEMENT OF CORNERS

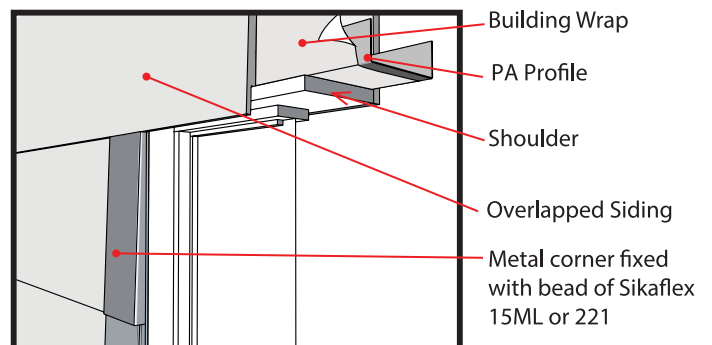
#### Gradual Placement of Corners



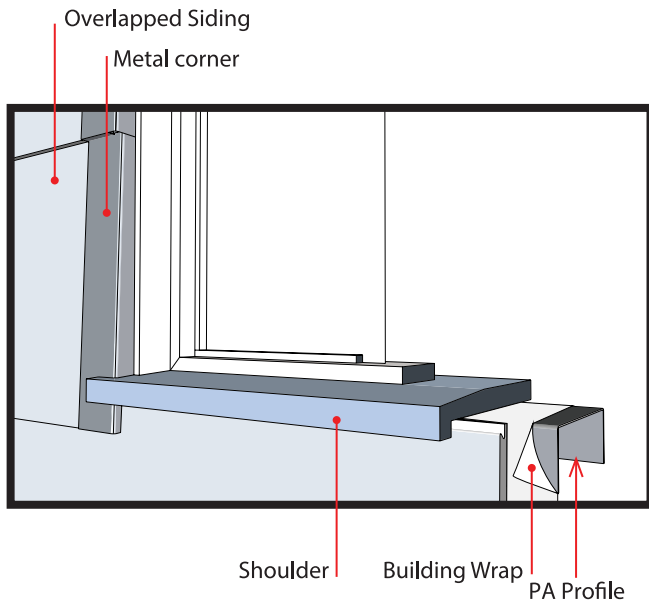
First, to place the corner, the Siding pieces should be placed on both sides of one corner. Then, place the corner from bottom to top. See details 1 and 2.

### WINDOW AND DOOR EDGE

#### A.1. Metal corner on vertical edge

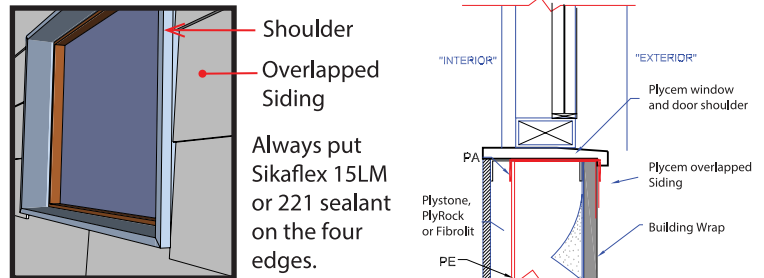
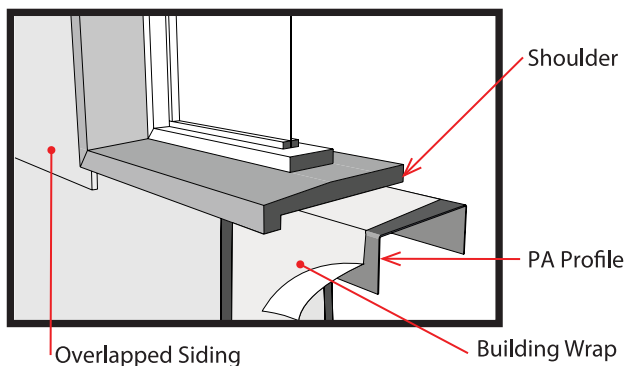
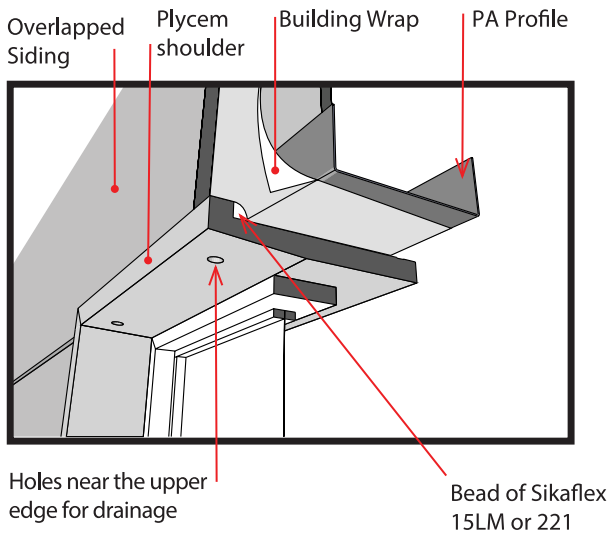


## QUICK INSTALLATION GUIDE FOR OVERLAPPED SIDING



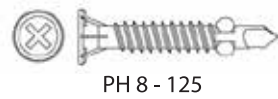
NOTE: The corners should be cut on the lower wing -on the opening side, for them to be adjusted. In this way, they protect the corner from moisture and other factors. They will be fixed with Sikaflex 15 LM or 221.

### B. Shoulder piece on the opening perimeter.



### FASTENINGS

#### SCREW FOR METAL PROFILE

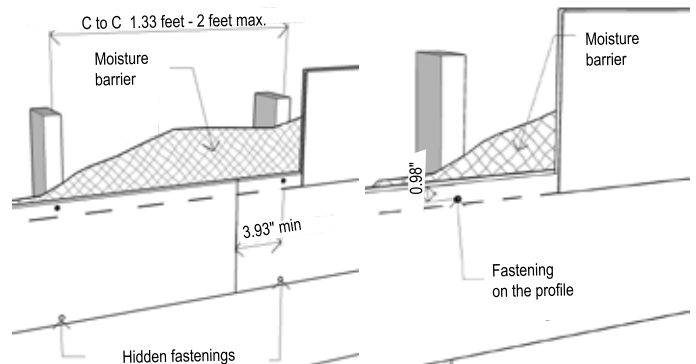


#### SCREW FOR WOOD

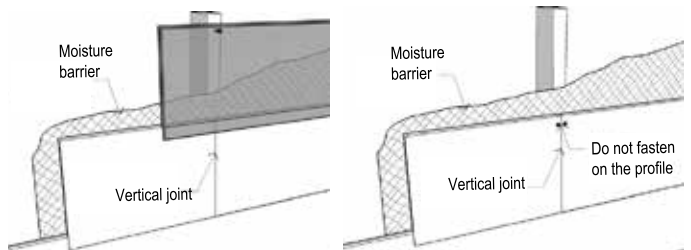


The distance of the fastening should be to the edge of the Siding piece -as shown in the picture.

### CORRECT FASTENING

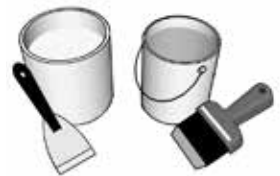


### INCORRECT FASTENING



### PAINT

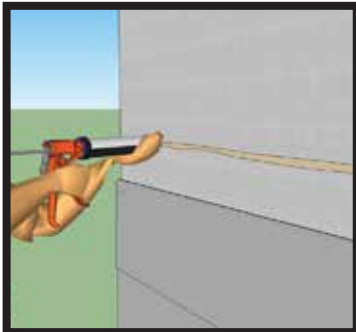
To give the Siding its finishing look, use 100% quality acrylic latex paint or sheathing. Always follow the manufacturer's instruction. To guarantee the maximum performance of the product, apply a 100% latex primer and paint for all the areas that have been cut.



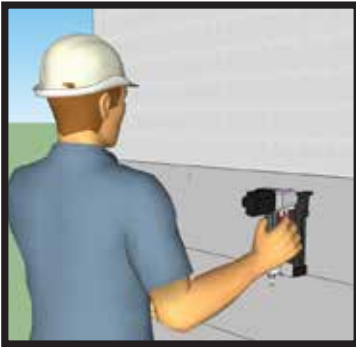
## QUICK INSTALLATION GUIDE FOR OVERLAPPED SIDING

### Fastening Siding with Adhesive and Steel Nail

Install the moisture barrier on the wall if it is not plastered or water-proofed.



Install every piece of Siding by previously applying a bead of Sikaflex 221 -or the like, on the same direction of the Siding piece. Then, hold the piece with a temporary or permanent steel nail while the Sikaflex dries.



You may also use the nailer to fix every piece of Siding by nailing it to the cement wall -manually or with an air nailer.

### Fastening Siding on Levelling Structure

On the cement wall, install semi-hard treated wood pieces -vertically or horizontally depending on the position of the Siding. Remember that each piece should be duly plumbed and with a distance of 1.33 feet minimum or 2 feet maximum. If the wall is not plastered and water-proofed, a moisture barrier should be placed on the structure (wood or furring).



Fasten the Siding pieces to the previously installed wood structure with 2" nails -using a hammer or air nailer.

In case of using a hammer, do not fully introduce the nails on the Plydekor -leave the head and about 0.15" of the body out. In this way, you avoid leaving hammer marks on the Siding.



### Fastening Siding with Furring Channel Pieces

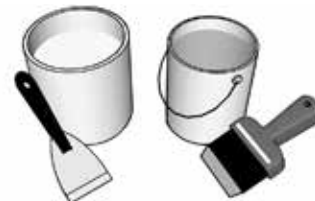


Install the furring channel on the cement wall with screws @ 1.33 feet -minimum and 2 feet -maximum, and expander or countersunk nails. Remember that each furring channel must be plumbed.



Install Siding on the furring channel with PL8-175 screw. Remember to place the screws according to the indicated fastening distance.

### PAINT



To give the Siding its finishing look, use 100% quality acrylic latex paint or sheating. Always follow the manufacturer's instruction. To guarantee the maximum performance of the product, apply a 100% latex primer and paint for all the areas that have been cut. It is recommended to apply a first coat before starting the installation.

## QUICK INSTALLATION GUIDE FOR OVERLAPPED SIDING

### DYE



To give the Siding system a finishing, use PlyCol- or dyes. Always follow the manufacturer's instructions when applying the dye. To guarantee the maximum performance of the product, apply two coats with a sponge or cloth.

#### STEP 1

First, take the sponge or cloth and add the PlyColor dye -or the like.



#### STEP 2

Use the sponge or cloth on the surface of the Cedar Siding piece -always on the same lengthwise direction in order to apply the first coat. See picture.



#### STEP 3

Before installing it, use the sponge on the sides of the Cedar Siding piece -on the tongue and groove joint edges.



#### STEP 4

Place the Cedar Siding pieces one by one. Once the wall is ready, add the Plycolor dye to the sponge or cloth again, and cover the surface with the dye on the second coat -as finishing.



#### FINAL LOOK





A company of



## For more information, contact us at:

- 
- |  |  |
|--|--|
| • <b>Costa Rica</b> (506) 2575-4300  | • <b>Suriname:</b> (0058) 414 302-8668, (593) 9 9800-2877                        |
| • <b>El Salvador</b> (503) 2251-9300   | • <b>Dominican Republic, Haití</b> (829) 548-6060                                |
| • <b>Honduras</b> (504) 2630-0730, (504) 2670-0456, Tegucigalpa (504) 2239-7954        | • <b>Cuba, Guadalupe, Bahamas, Haiti, Rep. Dominicana</b> (506) 8707-4602        |
| • <b>Nicaragua</b> (505) 2278-4288   | • <b>Puerto Rico, Jamaica, Trinidad &amp; Tobago, Barbados, Curazao,</b>         |
| • <b>Guatemala</b> (503) 7069-2903   | • <b>Bonaire, Aruba, Caimán, Saint Marteen, Saint Thomas</b> (001) 787 635-6974, |
| • <b>Panamá</b> (507) 6462-5527  | (506) 8707-4602  |
| • <b>Venezuela</b> (0058) 414 302-3714, (0058) 414 302-7670                            | • <b>Belice</b> (503) 7856-9980  |
| • <b>Colombia, Bolivia, Chile, Uruguay, Paraguay, Brasil, Ecuador</b> (593) 99800-2877 | • <b>México</b> (52) 5728-5300 ext 2136  |
| • <b>Perú:</b> (593) 9 9800-2877, (0051) 9 4557-2675                                   | • <b>United Kingdome</b> (506) 8702-2729   |
| • <b>USA</b> +1 713-677-1241   | • <b>Otro:</b> (506) 2575-4357   |
- 

Find us on:

**www.plycem.com**



Experto Plycem



Experto Plycem



Experto Plycem

Certification number for:

**Honduras:** RE-008/01/2010, SGA-007/01/2010 e SySO-005/2010  
**El Salvador:** RE-009/01/2010, SGA-008/01/2010 e SySO-006/2010  
See certificate on: [www.inteco.or.cr](http://www.inteco.or.cr)

Manufactured by:

**PLYCEM** Construsistemas Costa Rica S.A.  
**PLYCEM** Construsistemas Honduras S.A.  
**PLYCEM** Construsistemas El Salvador S.A.

The Plycem Company  
A Company with a Certified Management System



Enviroment



Occupational  
Safety



Quality