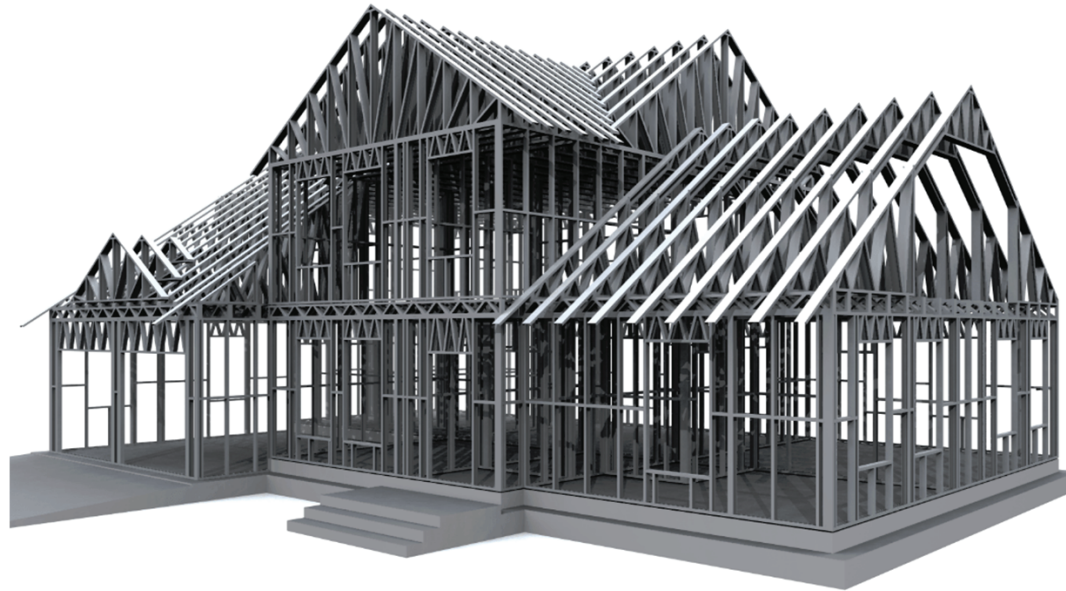


*A Subsidiary of AP Scott Trinidad Limited*



# **“STRUCTURES FOR LIFE!”**

**“THE MODERN WAY TO BUILD”**

---



## THE MODERN WAY TO BUILD

**STEEL-FRAMED ENGINEERED SOLUTIONS LTD.** Is the foremost provider in design, manufacture, assembly and installation of cold-formed steel framing solutions for all residential and light commercial construction. The system consists of C & U stud and tracks, custom designed for each individual project. Our system is an environment-friendly construction material which is recyclable unlike many other building materials.

We are focused on building back stronger, dealing with the real issues of Caribbean and climates and the vulnerabilities, and the construction sector with the pains of construction – shorter time to build, cleaner site, and most of the process and quality control is done off site in a factory environment.



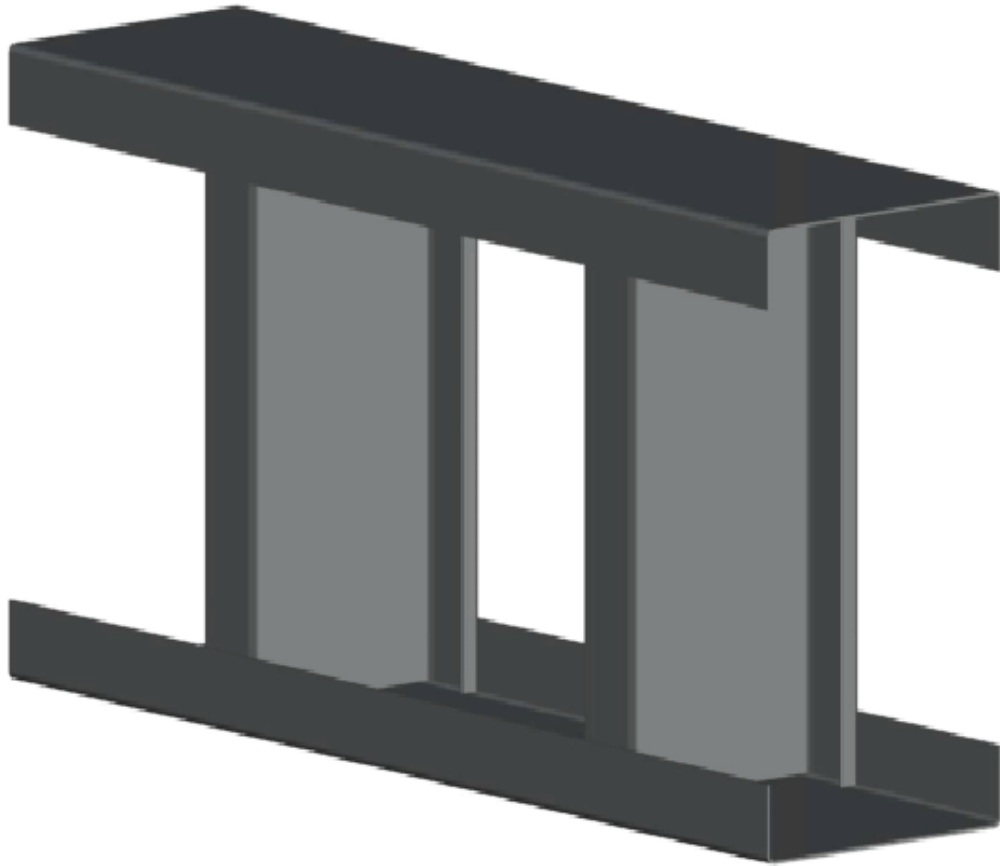




## THE MODERN WAY TO BUILD

Material wastage is a massive cost on construction sites. According to the article (attached to the application). “Construction and Demolition Waste Management Actions and Potential Benefits: A Perspective from Trinidad and Tobago” (<https://www.mdpi.com/2075-5309/9/6/150/htm>). Construction material waste is estimated to be approximately 20-30%. Steel frame engineers to exact 1mm precision and is manufactured in a controlled environment thus resulting in minimum waste. Furthermore, steel used is 70% recycled already thus making it a green and sustainable solution.

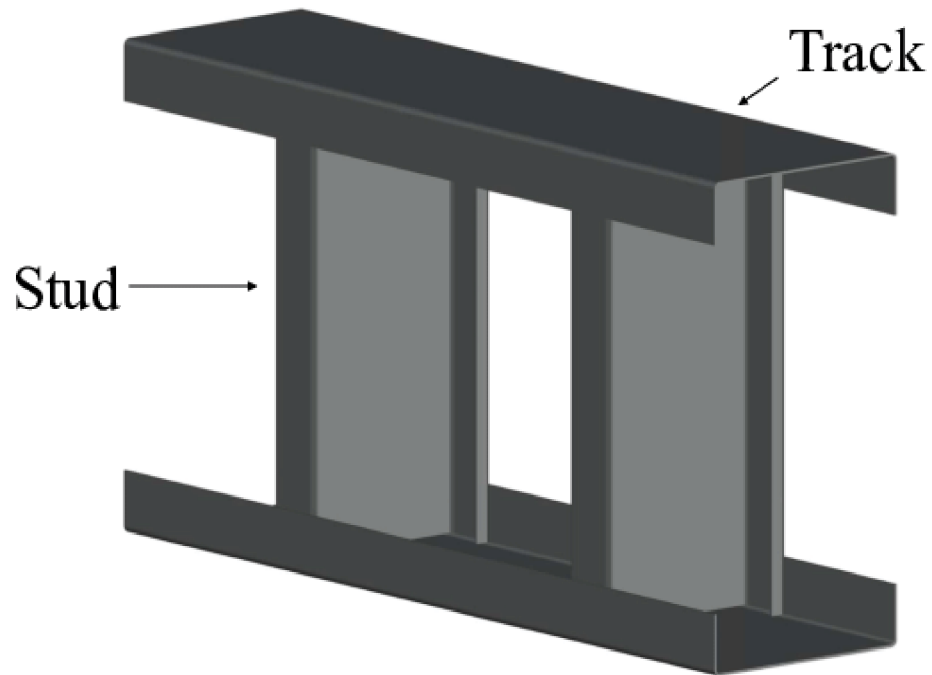
If you are looking for the modern way to build, while being eco-conscious, look no further! .Aside from the other benefits of using our system, we consider environmental to be number one.



## STUD & TRACK

BY **STEEL FRAMED**  
ENGINEERING SOLUTIONS LIMITED





## WHAT IS STUD & TRACK?

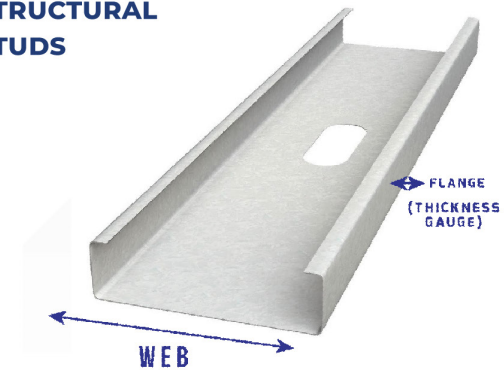
C & U stud and tracks, custom designed for each individual project. “U” shaped channel runners (track) are used as the top and bottom tracks to secure wall studs or end support closures for floor joist framings. The “C” studs are lined up in between the tracks, which are the components that make up the farming. Stud and Track come in a variety of gauges and are can be any custom length.

All steel framed construction starts with stud and track, custom lengths save you time in cutting and material wastage.

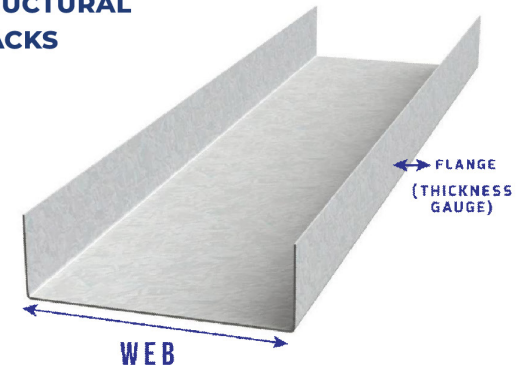
## WHAT ARE THE APPLICATIONS OF STUD & TRACK?

- Wall Framing
- Roofing Solutions (Trusses & Panels)
- Floor Joist (Mezzanine Flooring Systems)
- Window/Door Framing (Door Jambs)
- Decking
- Complete Structures
- Curtain Walls
- Facades

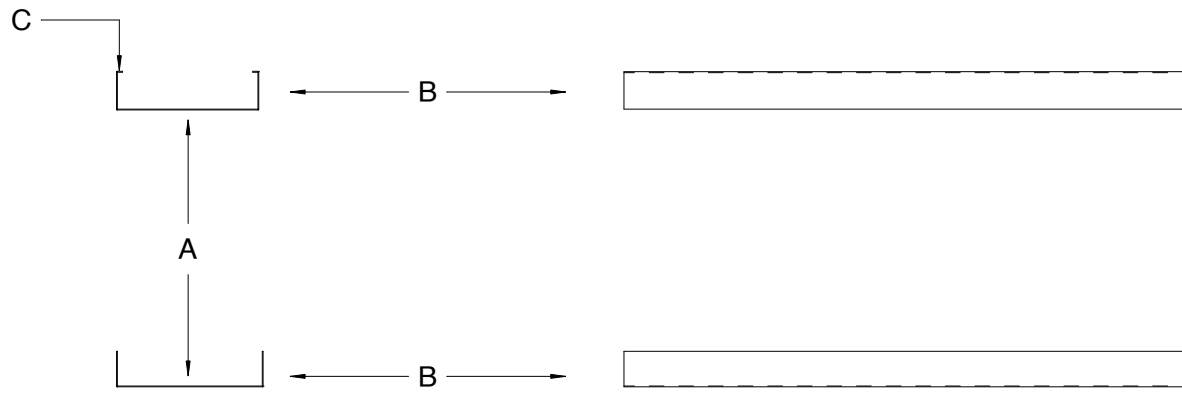
**STRUCTURAL STUDS**



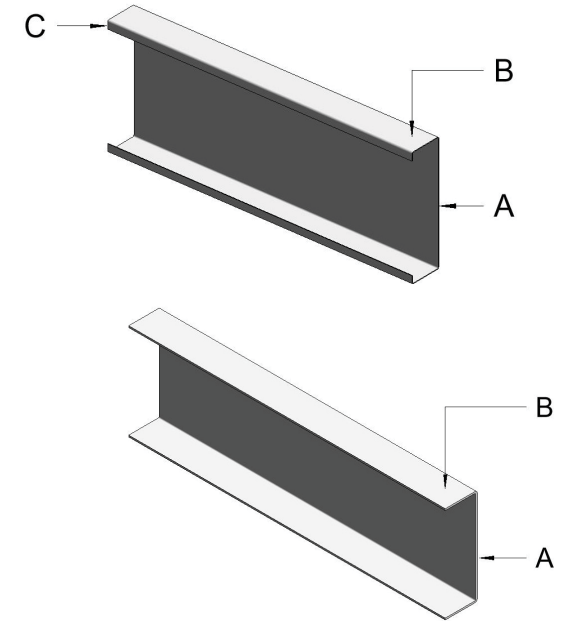
**STRUCTURAL TRACKS**







① PROFILE SECTION AND SIDE VIEW  
1 : 5



② LIPPED C PROFILE SECTION DETAIL  
1 : 1



③ OPEN C PROFILE SECTION DETAIL  
1 : 1

No.	Description	Date

## PROFILE DETAIL

Project number	N/A	D
Date	2021.05.24	
Drawn by	Author	
Checked by	Checker	
		Scale As indicated

## LIGHT GAUGE STEEL (LGS) MATERIAL PROFILE DATA SHEET



ID	WEIGHT kg/m	DIMENSIONS						PROPERTIES OF THE TOTAL SECTION													
		WEB A'	FLANGE B'	LIP C'	THICKNESS t	RADIUS R	Area	EJE X-X			EJE Y-Y			Ma	Va	m	J	Cw	xo		β
								Ix	Sx	rx	Iy	Sy	ry								
STUDS (LIPPED C PROFILE)																					
70S-41-105-550		70	40	6	1	2	1.5457	12.72	3.63	2.87	2.46	4.66	1.26	1.24	52.55	2.93	0.0052	28.82	-2.93	5.10	
90S-45-105-550		90	40	6	1	2	1.7457	22.56	5.01	3.59	3.71	7.86	1.46	1.70	59.35	2.70	0.0058	50.69	-2.70	7.89	
90S-41-155-550		90	40	6	1.5	2	2.5885	33.00	7.33	3.57	5.38	11.50	1.44	2.49	88.01	2.65	0.0194	71.68	-2.65	11.08	
140S-41-105-550		140	50	4.5	1	2	2.4157	71.71	10.24	5.45	8.62	18.73	1.89	3.48	82.13	2.95	0.0081	227.53	-2.95	18.09	
140S-41-155-550		140	50	4.5	1.5	2	3.5935	105.62	15.09	5.42	12.45	27.61	1.86	5.13	122.18	2.90	0.0270	326.01	-2.90	25.10	
C20015		200	50	7	1.5	2	4.5685	253.39	25.34	7.45	26.67	63.65	2.42	8.62	155.33	2.62	0.0343	837.04	-2.62	78.87	
C20019		200	50	7	2	2	6.0513	333.00	33.30	7.42	34.38	83.77	2.38	11.32	205.75	2.57	0.0807	1070.73	-2.57	99.71	
C30015		300	50	14	1.5	2	6.2785	726.22	48.41	10.75	94.05	178.18	3.87	16.46	213.47	2.46	0.0471	2732.27	-2.46	349.19	
C30019		300	50	14	2	2	8.3313	958.01	63.87	10.72	122.97	235.55	3.84	21.71	283.27	2.42	0.1111	3515.83	-2.42	451.65	
TRACKS (OPEN C PROFILE)																					
70S-41-105-550		70	46		1	2	1.5828	13.36	3.82	2.91	3.57	4.12	1.50	1.30	53.82	3.12	0.0053	30.00	-3.12	0.00	
90S-45-105-550		90	46		1	2	1.7828	23.55	5.23	3.63	3.87	6.95	1.47	1.78	60.62	2.88	0.0059	54.02	-2.88	0.00	
90S-41-155-550		90	46		1.5	2	2.6592	34.74	7.72	3.61	5.72	10.31	1.47	2.62	90.41	2.86	0.0199	78.80	-2.86	0.00	
140S-41-105-550		140	54.5		1	2	2.4528	73.73	10.53	5.48	7.03	17.51	1.69	3.58	83.40	3.08	0.0082	240.94	-3.08	0.00	
140S-41-155-550		140	54.5		1.5	2	3.6642	109.32	15.62	5.46	10.40	26.08	1.68	5.31	124.58	3.06	0.0275	353.97	-3.06	0.00	
P20015		200	57		1.5	2	4.6392	261.52	26.15	7.51	12.94	56.83	1.67	8.89	157.73	2.79	0.0348	925.25	-2.79	0.00	
P20019		200	57		2	2	6.1657	345.63	34.56	7.49	17.03	75.42	1.66	11.75	209.63	2.78	0.0822	1211.94	-2.78	0.00	
P30015		300	64		1.5	2	6.3492	749.64	49.98	10.87	19.63	139.34	1.76	16.99	215.87	2.72	0.0476	3270.30	-2.72	0.00	
P30019		300	64		2	2	8.4457	993.21	66.21	10.84	25.87	185.30	1.75	22.51	287.15	2.70	0.1126	4297.60	-2.70	0.00	



## STUD & TRACK - CUSTOM AND STANDARD LENGTHS AVAILABLE

2 1/2"	0.70MM X 140MM X COIL
2 1/2"	1.20MM X 145MM X COIL
2 3/4"	1.00MM X 162MM x COIL
2 3/4"	1.20MM X 170MM X COIL
3 5/8"	1.00MM X 182MM x COIL
3 5/8"	1.50MM X 182MM x COIL
3 5/8"	1.20MM X 220MM X COIL
6"	1.00MM X 249MM x COIL
6"	1.5MM x 249MM COIL
8"	1.50MM x 314MM x COIL
8" TRACK (Special)	1.5MM x 280MM COIL
12"	2.00MM X 428MM X COIL
3 1/2	1.00MM X 212MM X COIL



# BEFORE





# AFTER



# PRICING

Save time and money with our “ready-to-go” designs complete with pre-done costings, bill of quantities, architecturals, complete engineering, standard foundation design and all documents ready to submit for approvals (when building in Trinidad only).

Prices shown separately for material and labor for the “superstructure” (enclosed shell of the building) and includes: Complete Steel framing for internal and external walls and roof framing and all fasteners and anchors. All external cladding and roof sheeting, radiant barrier insulation, soffits and guttering.

Price does not include: Foundation, internal gypsum, kitchens, bathrooms doors and windows, plumbing and electrical and anything not specifically mentioned above.



# PRICING

Prices shown are for both standard and custom lengths. All studs have available matching tracks - option to have services holes pre-punched to your specifications.

## 12ft Length for the following sizes:

- 0.70m (22 gauge) 2 ½ inch **\$49.78** TTD or **\$7.34** USD
- 1.00m (20 gauge) 2 ¾ inch **\$82.88** TTD or **\$12.22** USD
- 1.00m (20 gauge) 3 ⅝ inch **\$94.99** TTD or **\$14.01** USD
- 1.20 (18 gauge) 2 ¾ inch **\$58.73** TTD or **\$8.66** USD
- 1.20 (18 gauge) 3 ⅝ inch **\$125.47** TTD or **\$18.51** USD
- 1.50m (16 gauge) 3 ⅝ inch **\$158.45** TTD or **\$23.37** USD
- 1.00m (20 gauge) 6 inch **\$130.68** TTD or **\$19.27** USD
- 1.50m (16 gauge) 6 inch **\$200.41** TTD or **\$29.56** USD
- 1.50m (16 gauge) 8 inch **\$229.84** TTD or **\$33.90** USD
- 2.00m (14 gauge) 12 inch **\$417.51** TTD or **\$61.58** USD

# PRICING

Prices shown are for both standard and custom lengths. All studs have available matching tracks - option to have services holes pre-punched to your specifications.

**Custom length for the following sizes:** (All prices are based on per running foot)

- 0.70m (22 gauge) 2 ½ inch **\$4.15** TTD or **\$0.61** USD
- 1.00m (20 gauge) 2 ¾ inch **\$6.91** TTD or **\$1.02** USD
- 1.00m (20 gauge) 3 ⅝ inch **\$7.92** TTD or **\$1.17** USD
- 1.20 (18 gauge) 2 ¾ inch **\$4.89** TTD or **\$0.72** USD
- 1.20 (18 gauge) 3 ⅝ inch **\$10.46** TTD or **\$1.54** USD
- 1.50m (16 gauge) 3 ⅝ inch **\$13.20** TTD or **\$1.95** USD
- 1.00m (20 gauge) 6 inch **\$10.89** TTD or **\$1.61** USD
- 1.50m (16 gauge) 6 inch **\$16.70** TTD or **\$2.46** USD
- 1.50m (16 gauge) 8 inch **\$17.12** TTD or **\$2.52** USD
- 2.00m (14 gauge) 3 ⅝ inch **\$34.79** TTD or **\$5.13** USD



## EXPORT ORDERS

Individual members are color coded, banded, and flat packed for economical shipping purposes.

We also offer installation support in the form of the following: Video tutorials, installation manual as well as the option to have support from our local team come to your site.

The “difficult” work is done in the engineering and manufacturing of the members in the factory. This leaves no room for errors and a seamless installation process.

## LOCAL ORDERS

All components are delivered to site pre-panelised. Floor Joists are assembled in factory for easy installation on site.

This allows for erection efficiency, ensuring high quality on site, while significantly reducing labor costs.

